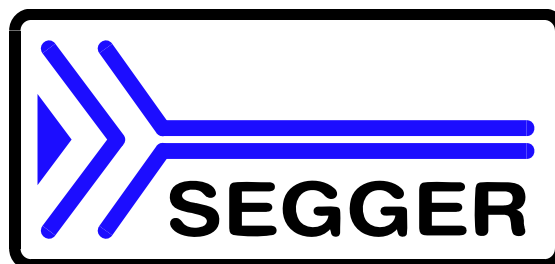


Getting started with **SEGGER Eval Software and HEW**

Document AN00003-R1

Date: September 29, 2008



A product of SEGGER Microcontroller GmbH & Co. KG

www.segger.com

Disclaimer

Specifications written in this document are believed to be accurate, but are not guaranteed to be entirely free of error. The information in this manual is subject to change for functional or performance improvements without notice. Please make sure your manual is the latest edition. While the information herein is assumed to be accurate, SEGGER Microcontroller GmbH & GmbH (the manufacturer) assumes no responsibility for any errors or omissions. The manufacturer makes and you receive no warranties or conditions, express, implied, statutory or in any communication with you. The manufacturer specifically disclaims any implied warranty of merchantability or fitness for a particular purpose.

Copyright notice

You may not extract portions of this manual or modify the PDF file in any way without the prior written permission of the manufacturer. The software described in this document is furnished under a license and may only be used or copied in accordance with the terms of such a license.

© 2008 SEGGER Microcontroller GmbH & Co. KG, Hilden / Germany

Trademarks

Names mentioned in this manual may be trademarks of their respective companies.

Brand and product names are trademarks or registered trademarks of their respective holders.

Contact address

SEGGER Microcontroller GmbH & Co. KG

In den Weiden 11
D-40721 Hilden

Germany

Tel. +49 2103-2878-0

Fax. +49 2103-2878-28

Email: support@segger.com

Internet: <http://www.segger.com>

Manual versions

This manual describes the latest software version. If any error occurs, please inform us and we will try to assist you as soon as possible.

For further information on topics or routines not yet specified, please contact us.

Revision	Date	By	Explanation
0	080829	TS	Initial version.
1	080929	TS	Document corrected

About this document

Assumptions

This document assumes that you already have a solid knowledge of the following:

- The software tools used for building your application (assembler, linker, C compiler)
- The C programming language
- The target processor
- DOS command line.

If you feel that your knowledge of C is not sufficient, we recommend *The C Programming Language* by Kernighan and Richie (ISBN 0-13-1103628), which describes the standard in C-programming and, in newer editions, also covers the ANSI C standard.

How to use this manual

This manual explains all the functions and macros that the product offers. It assumes you have a working knowledge of the C language. Knowledge of assembly programming is not required.

Typographic conventions for syntax

This manual uses the following typographic conventions:

Style	Used for
Body	Body text.
Keyword	Text that you enter at the command-prompt or that appears on the display (that is system functions, file- or pathnames).
Parameter	Parameters in API functions.
Sample	Sample code in program examples.
Reference	Reference to chapters, sections, tables and figures or other documents.
GUI Element	Buttons, dialog boxes, menu names, menu commands.
Emphasis	Very important sections

Table 1.1: Typographic conventions



SEGGER Microcontroller GmbH & Co. KG develops and distributes software development tools and ANSI C software components (middleware) for embedded systems in several industries such as telecom, medical technology, consumer electronics, automotive industry and industrial automation.

SEGGER's intention is to cut software development-time for embedded applications by offering compact flexible and easy to use middleware, allowing developers to concentrate on their application.

Our most popular products are emWin, a universal graphic software package for embedded applications, and embOS, a small yet efficient real-time kernel. emWin, written entirely in ANSI C, can easily be used on any CPU and most any display. It is complemented by the available PC tools: Bitmap Converter, Font Converter, Simulator and Viewer. embOS supports most 8/16/32-bit CPUs. Its small memory footprint makes it suitable for single-chip applications.

Apart from its main focus on software tools, SEGGER develops and produces programming tools for flash microcontrollers, as well as J-Link, a JTAG emulator to assist in development, debugging and production, which has rapidly become the industry standard for debug access to ARM cores.

Corporate Office:

<http://www.segger.com>

United States Office:

<http://www.segger-us.com>

EMBEDDED SOFTWARE (Middleware)



emWin

Graphics software and GUI

emWin is designed to provide an efficient, processor- and display controller-independent graphical user interface (GUI) for any application that operates with a graphical display. Starterkits, eval- and trial-versions are available.



embOS

Real Time Operating System

embOS is an RTOS designed to offer the benefits of a complete multitasking system for hard real time applications with minimal resources. The profiling PC tool embOSView is included.



emFile

File system

emFile is an embedded file system with FAT12, FAT16 and FAT32 support. emFile has been optimized for minimum memory consumption in RAM and ROM while maintaining high speed. Various Device drivers, e.g. for NAND and NOR flashes, SD/MMC and CompactFlash cards, are available.



USB-Stack

USB device stack

A USB stack designed to work on any embedded system with a USB client controller. Bulk communication and most standard device classes are supported.

SEGGER TOOLS

Flasher

Flash programmer

Flash Programming tool primarily for microcontrollers.

J-Link

JTAG emulator for ARM cores

USB driven JTAG interface for ARM cores.

J-Trace

JTAG emulator with trace

USB driven JTAG interface for ARM cores with Trace memory. supporting the ARM ETM (Embedded Trace Macrocell).

J-Link / J-Trace Related Software

Add-on software to be used with SEGGER's industry standard JTAG emulator, this includes flash programming software and flash breakpoints.



Table of Contents

1	Introduction	7
1.1	About this manual	8
1.2	What is the purpose of this eval package ?	9
1.3	Software components in the package	10
2	Licensing	11
2.1	License terms	12
3	Software components	13
3.1	Setup	14
3.2	Project structure	15
3.3	Eval limitations	16
4	Getting started	17
4.1	Running a sample application	18
4.2	Evaluating the SeggerDemo	20
5	Sample applications	25
5.1	List of sample applications	26
5.2	emFile samples	28
5.3	emWin samples	33
5.4	embOS/IP samples	37
5.5	embOS samples	39
5.6	emUSB samples	40
6	Literature and references	41

Chapter 1

Introduction

This chapter describes the purpose of this manual and of the entire software package, which consists of different component.

1.1 About this manual

The purpose of this document is to describe the SEGGER eval software components and samples delivered in this eval package.

1.2 What is the purpose of this eval package ?

This eval package has been designed to provide customers and potential customers (you) with a complete, easy to use software package for the specified target hardware and HEW Workbench for Renesas (target compiler).

It allows you to easily check out the target hardware, the target compiler and our software components. This evaluation process typically does not take a lot of time since the software can be easily recompiled and downloaded to the target.

1.2.1 What are the components of the software package?

The SEGGER software components are provided in library form, the applications are provided in source code form. Most packages also come with a "Prebuild"-folder, containing prebuild executables, which simply need to be downloaded to the target.

1.2.2 Can I recompile the application supplied?

Yes. All you need is the target compiler/eval version of the target compiler. Refer to "ReadMe.txt" in the "Start"-folder for more information.

1.2.3 Can I write my own applications with this eval package?

Yes, you can write your own applications. However the purpose of this eval package is to test the soft- and hardware for fitness. You may not use the result in a product.

1.3 Software components in the package

Not every Segger eval package contains all Segger products, e.g. emWin will only be included if your target eval board has a display.

1.3.1 emFile

emFile is SEGGER's embedded file system that can be used on any media for which you can provide basic hardware access functions.

emFile is a high-performance software that has been optimized for speed, versatility and memory footprint.

emFile documentation can be found under "Doc\UM02001_emFile.pdf".

1.3.2 emWin

emWin is SEGGER's embedded Graphical User Interface (GUI) using a feature rich API and providing an efficient, processor- and LCD controller-independent GUI for any application that operates with a display.

emWin documentation can be found under "Doc\UM03001_emWinUser.pdf".

1.3.3 embOS

embOS is SEGGER's embedded priority-controlled multitasking system. It is designed to be used as an embedded operating system for the development of real-time applications and has been optimized for minimum memory consumption in both RAM and ROM, as well as high speed and versatility.

embOS documentation can be found under "Doc\UM01003_embOS_Generic.pdf".

1.3.4 embOS/IP

embOS/IP is SEGGER's embedded TCP/IP stack. It is a CPU independent, high-performance TCP/IP stack that has been optimized for speed, versatility and small footprint.

embOS/IP documentation can be found under "Doc\UM07001_embOSIP.pdf".

1.3.5 emUSB

emUSB is SEGGER's embedded USB stack. It is written in ANSI C and features bulk communication as well as device classes such as MSD, CDC or HID.

emUSB documentation can be found under "Doc\UM09001_USBStack.pdf".

Chapter 2

Licensing

This chapter gives information about the licensing terms under which the SEGGER Eval Software is published.

2.1 License terms

The SEGGER Eval Software package may only be used when fully agreeing to the terms mentioned in this chapter and agreeing to the license terms mentioned in "License.txt" .

If this description contradicts the terms of the "License.txt", the terms of the license file should supersede this description.

In case of doubt, please contact us: info@segger.com .

2.1.1 What you may do

You may use the software contained in this eval package to evaluate SEGGER software on the target hardware.

You may recompile and modify the sample programs provided as part of the package.

2.1.2 What you are not allowed to do

You are not allowed to use the software in this eval package for something other than evaluating the SEGGER software. You are not allowed to use this software package in a product.

Chapter 3

Software components

This chapter explains the folder structure used for the software components as well as the project structure and the limitations of the eval version.

3.1 Setup

Requirements

In order to recompile the projects you will need the HEW Workbench as indicated in the ReadMe.txt file.

In order to recompile the emWin simulation you will need a C-compiler. The shipping contains an ready to go project for Microsoft Visual C++ 6.0. Microsoft Visual C++ 6.0 or Microsoft Visual Studio .Net are required to use this project.

Installation

All eval packages are supplied as a zip-file. The latest version of the software can be archived from the following location:

<http://www.segger.com/evalboards.html>

Extract it to any folder of your choice, preserving the directory structure of the zip-file. Assuming that you are using the HEWWorkbench project manager to develop your application, no further installation steps are required. You will find prepared sample start applications, which you should use and modify to write your application.

All eval packages include evaluation builds some or all of the following products:

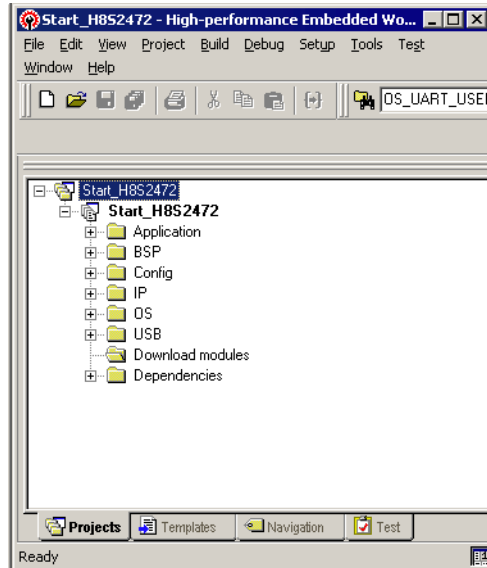
Component	Description
embOS	SEGGER's priority-controlled real time operating system.
emOS/IP	SEGGER's CPU independent TCP/IP stack.
emUSB	SEGGER's high speed USB device stack.

Table 3.1: Eval package components

All products can be combined and purchased separately. For ordering information, please contact SEGGER, www.segger.com.

3.2 Project structure

All components of the eval package are provided as libraries and the required header files. The sample applications are provide in source form. The sample projects are organized in the following way:



The root directory of the eval package includes three folders, "Doc", "Prebuild", "Start" and this documentation.

The "Doc"-folder contains the user guides for the included SEGGER Eval Software and the "License.txt". The "Start"-folder contains all files necessary for the SEGGER Eval Software itself.

The "Prebuild"-folder contains prebuild executables, which simply need to be downloaded to the target.

The "Start"-folder may contain an additional directory (*Windows*), which is not included in the project tree of the HEW Workbench project.

Directory	Description
Application	Includes the sample applications.
BSP	Includes the Board Support Package (BSP). The BSP consists all files which are required to initialize the hardware and build a project.
Config	Includes the configuration files of the included software packages.
FS	Includes the emFile header files and the emFile libraries.
Inc	Includes utility header files which are not directly related to one of the included software packages.
IP	Includes the embOS/IP header files and the embOS/IP libraries.
OS	Includes the embOS header files and the embOS libraries and <code>main.c</code> .
USB	Includes the header files and the emUSB libraries.

Table 3.2: Eval package structure

3.3 Eval limitations

The included eval versions of the different components of the eval package have the following limitations:

Component	Description
emFile	The eval version of the emFile libraries can only handle one open file at any given time.
embOS	The eval version of the embOS libraries run without a time limit with a maximum of three tasks. If your application creates more than three tasks stops embOS after a time limit of 15 minutes.
emOS/IP	The eval version of the embOS/IP libraries have a time limit of 15 minutes on the connection.
emUSB	The eval version of the emUSB libraries have a time limit of 15 minutes on the connection.
emWin	The eval version of the emWin library shows an evaluation notification before the actual application starts.

Table 3.3: Limitations of eval package components

Your use of the eval package or of any part included in the project indicates your acknowledgment and agreement to the SEGGER eval software license. `License.txt` is located in the `Doc` directory of the eval package.

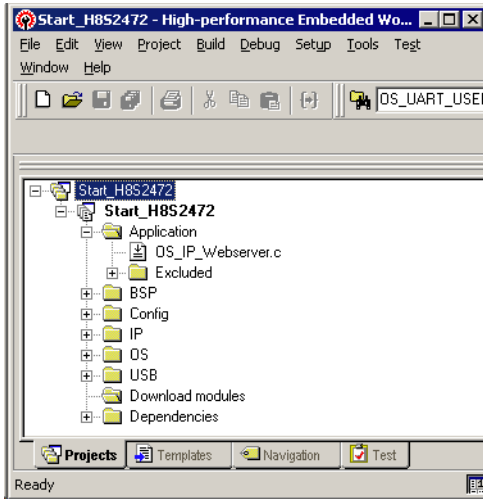
Chapter 4

Getting started

This chapter contains all required information to start working with the sample applications.

4.1 Running a sample application

The application folder includes the selected sample application, normally `OS_Start_LEDBlink.c` and a folder which is excluded from build. The **Excluded** folder contains all available sample applications. All available samples contain a function `MainTask()`. `MainTask()` is called from program main which is located in the **OS** folder.



`main.c` is required by all supplied sample applications.

```
#include "RTOS.H"
#include "BSP.h"

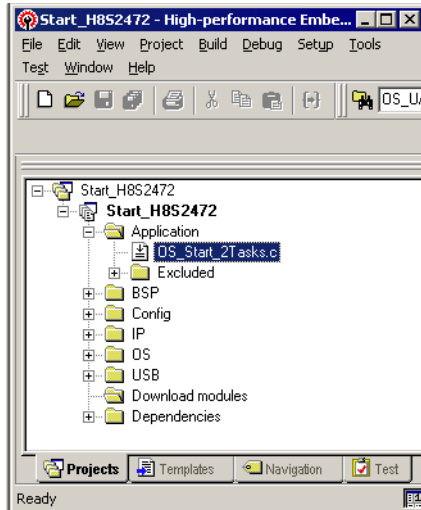
void MainTask(void);

static OS_STACKPTR int Stack0[512]; /* Task stacks */
static OS_TASK TCB0; /* Task-control-blocks */

/*****
 *
 *      main
 */
void main(void) {
    OS_IncDI(); /* Initially disable interrupts */
    OS_InitKern(); /* Initialize OS */
    OS_InitHW(); /* Initialize Hardware for OS */
    BSP_Init(); /* Initialize BSP module */
    BSP_SetLED(0);
    OS_CREATETASK(&TCB0, "MainTask", MainTask, 100, Stack0);
    OS_Start();
}
```

`main()` creates a single task called `MainTask`, which is implemented in every sample application.

Open the **Application** folder and use "drag and drop" in the **Workspace** window of the HEW Workbench to change the sample application. Move the included sample application (e.g. OS_Start_LEDBlink.c) in the **Excluded** folder and move the favored sample application from the **Excluded** folder to the **Application** folder. Use the context menu to exclude the file in the **Excluded** folder and please also use the context menu to include the new file in the the **Application** folder.

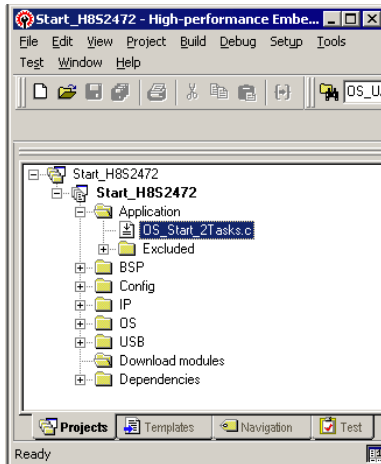


Some embOS/IP and emUSB sample applications are client/server applications and consist of an embedded side and a PC side. The PC applications are provided in source code and as precompiled executable (.exe). For compiling the example application you need a Microsoft compiler. The compiler is part of Microsoft Visual C++ 6.0 or Microsoft Visual Studio .Net. All Windows host sample applications are located in the Windows folder of your eval project.

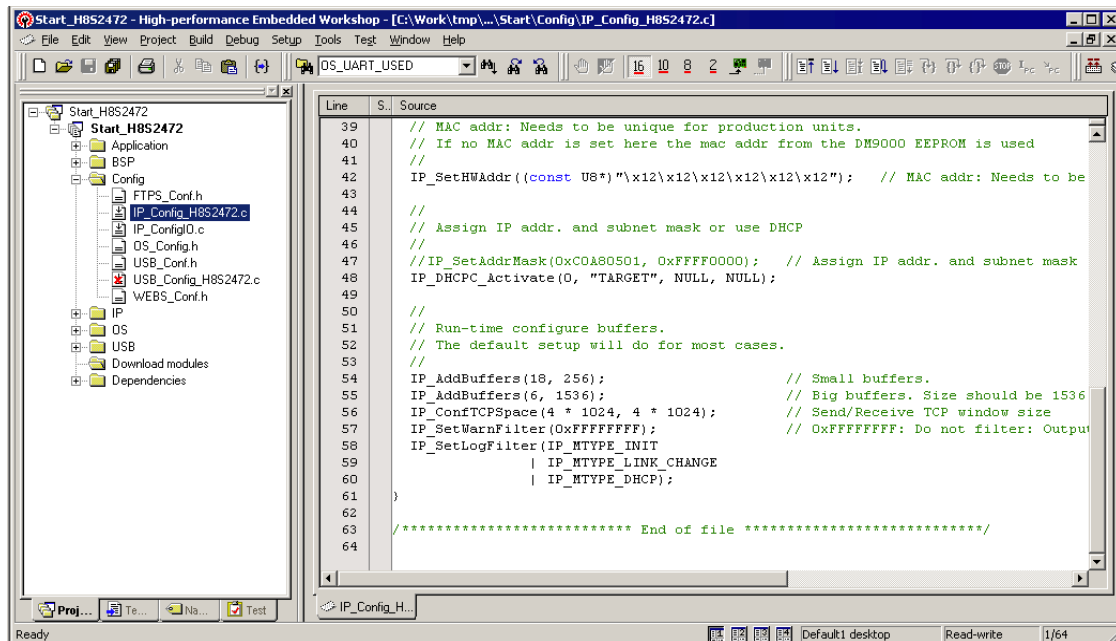
4.2 Evaluating the SeggerDemo

The following steps describe what to do step by step to fully evaluate the Segger-Demo software on your RSKH8S2472 eval board.

1. Get a fresh copy of the project and files.
2. Open the project file "Start_H8S<BSP NAME>.hws" with the HEW Workbench. Your screen should look similar to the screenshot below.



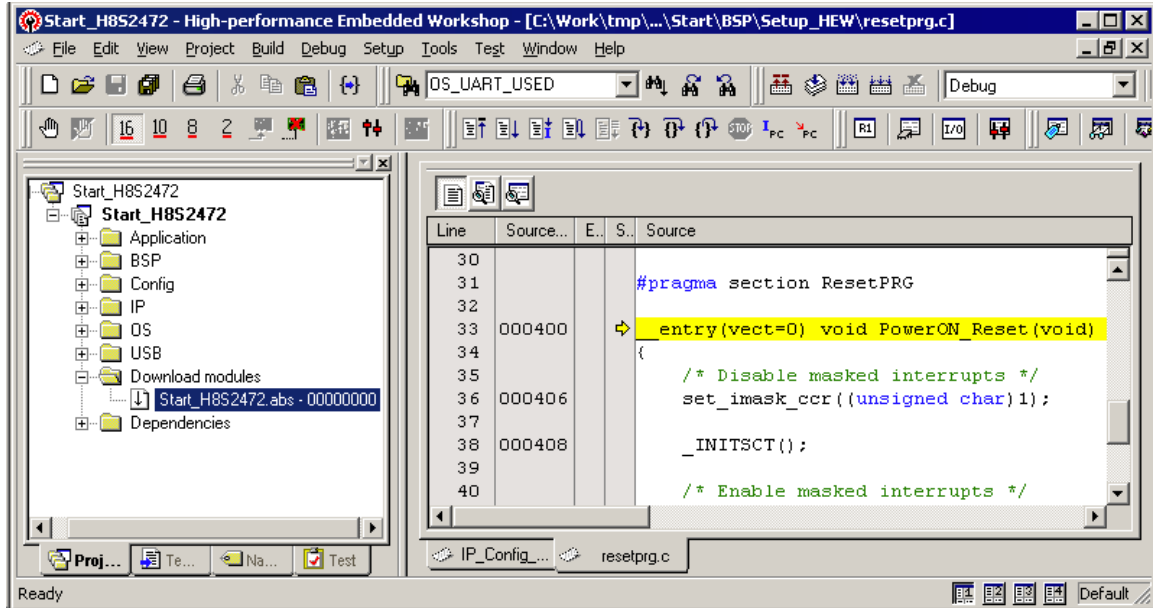
3. If you are not using a DHCP server in your network you will need to enter an IP address and subnetmask into the file "Start\Config\IP_Config_H8S2472.c" manually. The screenshot below shows an example for the IP address 192.168.5.5 with subnetmask 255.255.0.0 . *



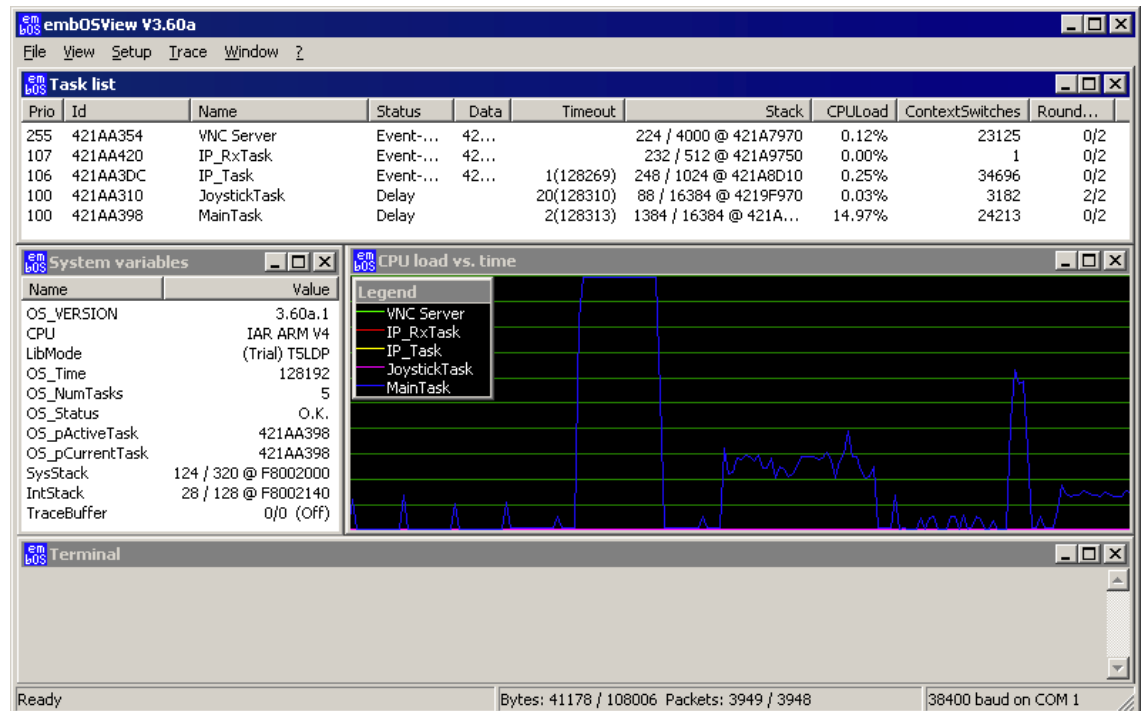
To disable the DHCP client comment the line with the call to `IP_DHCP_Activate()` and use instead the call to `IP_SetAddrMask()`.

4. Press [F7] to compile the SeggerDemo sample application. The build log should report:
Total number of errors: 0
Total number of warnings: 0
5. Make sure that the RS232 cable is connected to your eval board and your PC. **
6. Make sure that the ethernet cable is connected to a hub/switch and your PC is connected to the same hub/switch. *
7. Make sure your eval board is powered.

8. Download the application and start a debug session.
After download your screen should be similar to the screenshot below, halting at `PowerON_Reset()`.

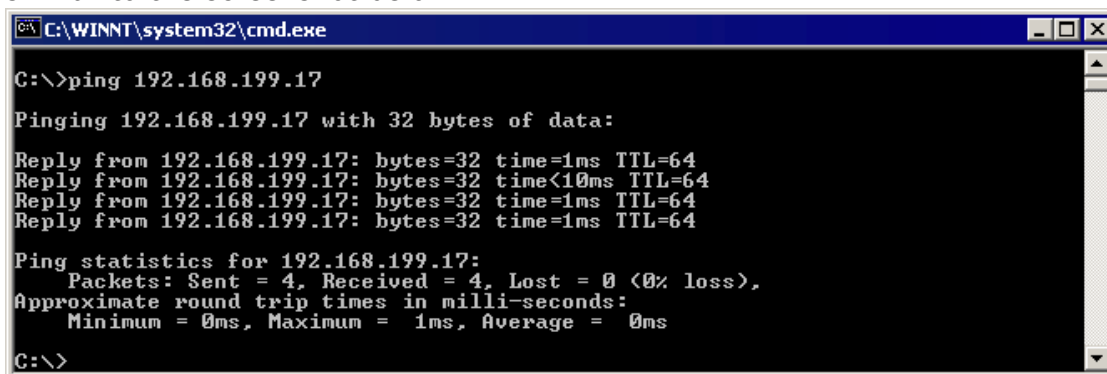


9. Press [F5] to run the application.
10. Start "Windows\OS\embOSView.exe" to verify that the UART is sending OS specific data. Your screen should look similar to the screenshot below. **



If not please refer to the embOS Generic Documentation (Doc\embOS_Generic.pdf) for troubleshooting.

11. Open a command prompt and try to ping your target. Your screen should look similar to the screenshot below. *



```
C:\WINNT\system32\cmd.exe
C:\>ping 192.168.199.17

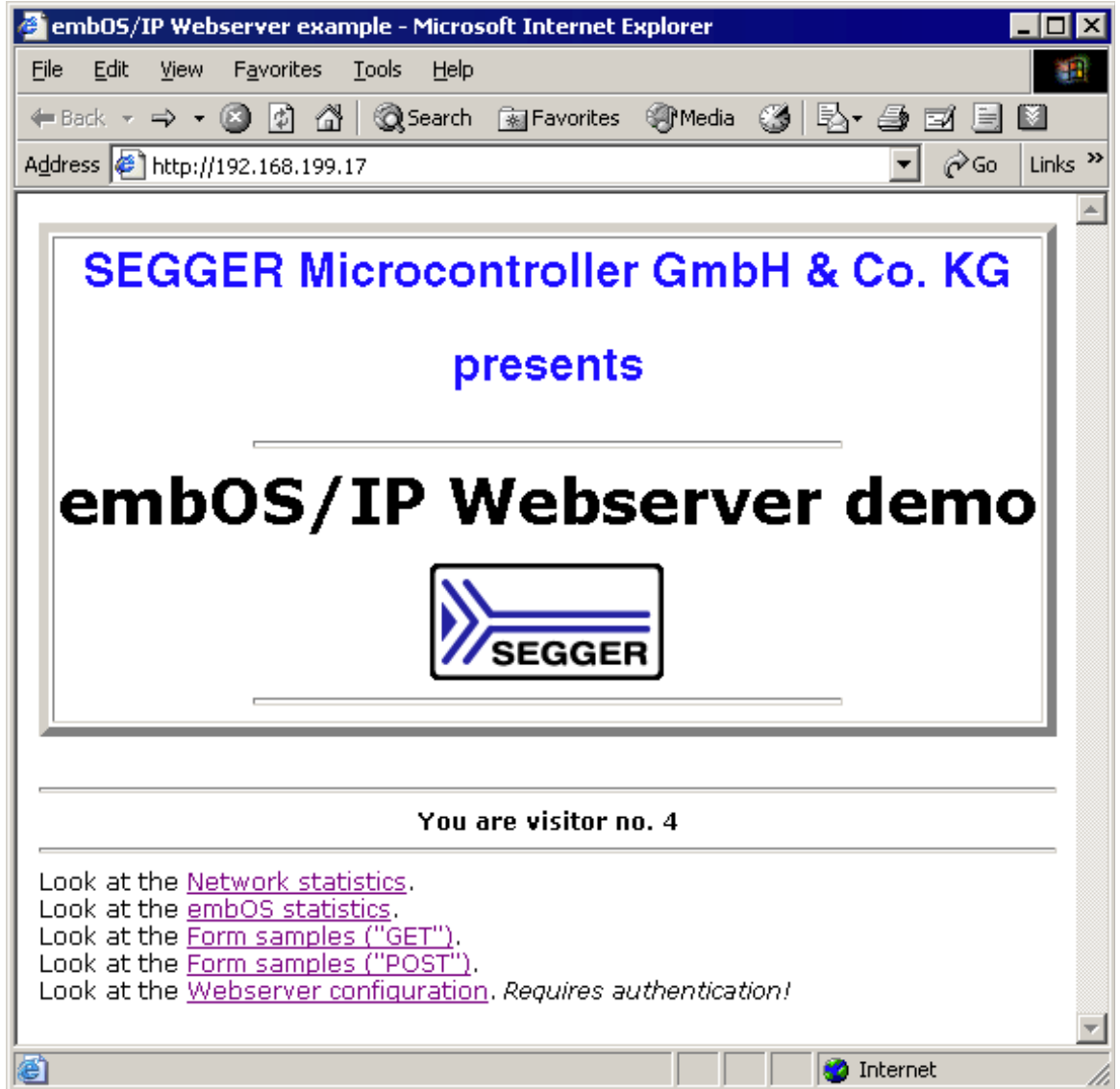
Pinging 192.168.199.17 with 32 bytes of data:

Reply from 192.168.199.17: bytes=32 time=1ms TTL=64
Reply from 192.168.199.17: bytes=32 time<10ms TTL=64
Reply from 192.168.199.17: bytes=32 time=1ms TTL=64
Reply from 192.168.199.17: bytes=32 time=1ms TTL=64

Ping statistics for 192.168.199.17:
    Packets: Sent = 4, Received = 4, Lost = 0 (0% loss),
    Approximate round trip times in milli-seconds:
        Minimum = 0ms, Maximum = 1ms, Average = 0ms

C:\>
```

12. You can now try to connect to the webserver by entering "http://<target_ip>" into your webbrowser. your screen should look similar to the screenshot below. *



13. You can test the FTP server by connecting to the target on port 21 with a FTP client. You can do this via a command prompt by following the screenshot below. *

```

C:\WINNT\system32\cmd.exe - ftp
C:\>ftp
ftp> open 192.168.199.17
Connected to 192.168.199.17.
220 Welcome to ftp server
User (192.168.199.17:(none)): anonymous
331 Password required.
Password:
230 User logged in, proceed.
ftp> mkdir test
227 Directory successfully created.
ftp> cd test
200 directory changed to /test/
ftp> dir
200 Command okay.
150 File status okay; about to open data connection.
drw-r--r--  1 root  0 Nov  8  2006 .
drw-r--r--  1 root  0 Nov  8  2006 ..
226 Closing data connection. Requested file action successful.
ftp: 77 bytes received in 0.01Seconds 5.13Kbytes/sec.
ftp>

```

14. After evaluating all parts of the SeggerDemo you may evaluate the other samples located in the "Application"-folder.

- * Only applies if the BSP contains embOS/IP
- ** Only applies if embOSView is supported by the BSP

Chapter 5

Sample applications

This chapter describes the usage of the most important sample applications.

5.1 List of sample applications

The list below contains the most important sample applications that are shipped. All sample applications can be found in the "Start\Application"-folder.

File(s)	Description
embOS/IP samples	
OS_IP_FTPServer.c	FTP server example using the filesystem as storage space.
OS_IP_Shell.c	Shell server example listening on port 23.
OS_IP_SimpleServer.c	Server example listening on port 23. Returns the actual OS time on keypress.
OS_IP_Start.c	Sample using the TCP/IP stack.
OS_IP_Webserver.c	Webserver example using a readonly filesystem.
embOS samples	
OS_Main_EVENT.c	Sample program for embOS using EVENT object.
OS_Main_OS_Q.c	Sample program for embOS using queues.
OS_Main_TaskEx.c	Sample program for embOS using extended task contexts.
OS_MeasureCST_HRTimer_embOSView.c	Performance test program for embOS using embOS-View for outputs.
OS_MeasureCST_HRTimer_Printf.c	Performance test program for embOS
OS_MeasureCST_Scope.c	Performance test program for embOS designed for oscilloscope measurement.
OS_PerformanceTest.c	embOS sample used for measuring the RTOS.
OS_Start_2Tasks.c	Sample program for embOS using 2 tasks.
OS_Start_LEDBlink.c	Sample program for embOS using 2 tasks to toggle LEDs.
emUSB samples	
USB_BULK_Echo1.c	USB BULK sample showing a simply 1-byte echo server.
USB_BULK_EchoFast.c	USB BULK sample fast echo server to test the stack.
USB_BULK_ShowDeviceState.c	USB BULK sample showing the status of the current USB state.
USB_BULK_Test.c	USB BULK sample to test the stack.
USB_CDC_Start.c	emUSB sample showing usage of virtual COM port.
USB_HID_Mouse.c	emUSB sample showing a USB mouse moving.
USB_MSD_FS_Start.c	MSD sample using the filesystem driver as MSC storage driver.

Table 5.1: Sample applications

5.2 embOS/IP samples

These samples use SEGGER embOS/IP to demonstrate TCP/IP server applications.

5.2.1 OS_IP_FTPServer.c

This sample application runs an FTP server. The FTP server listens on port 21 for an incoming connection.

You can easily login to the FTP by using the "anonymous" account.

The storage space for the FTP server is provided by the emFile filesystem.

5.2.2 OS_IP_Shell.c

This sample demonstrates using the IP-shell to diagnose the IP stack. It opens TCP-port 23 (telnet) and waits for a connection.

The actual Shell server is part of the stack, which keep the application program nice and small.

To connect to the target, use the command line:

```
> telnet <target-ip>
```

Where <target-ip> represents the IP address of the target.

5.2.3 OS_IP_SimpleServer.c

This sample demonstrates setup of a simple server which simply sends back the target system tick for every character received. It opens TCP-port 23 (telnet) and waits for a connection.

To connect to the target, use the command line:

```
> telnet <target-ip>
```

Where <target-ip> represents the IP address of the target.

5.2.4 OS_IP_Start.c

This sample demonstrates use of the IP stack without any server or client program.

To ping the target, use the command line:

```
> ping <target-ip>
```

Where <target-ip> represents the IP address of the target.

5.2.5 OS_IP_Webserver.c

This sample application runs a webserver. The webserver listens on port 80 for incoming connections.

The storage space for the webserver is provided by the emFile filesystem. The web-server sample uses a readonly filesystem using generated websites in C-code.

5.3 embOS samples

These samples use SEGGER embOS to demonstrate RTOS features.

5.3.1 OS_Main_EVENT.c

This sample program for embOS demonstrates usage of EVENT objects.

5.3.2 OS_Main_OS_Q.c

This sample program for embOS demonstrates usage of QUEUE objects.

5.3.3 OS_Main_TaskEx.c

This sample program for embOS demonstrates usage extended task contexts.

5.3.4 OS_MeasureCST_HRTimer_embOSView.c

This benchmark measures the OS context switch time and displays the result in the terminal window of embOSView.

It is completely generic and runs on every target that is configured for embOSView.

5.3.5 OS_MeasureCST_HRTimer_Printf.c

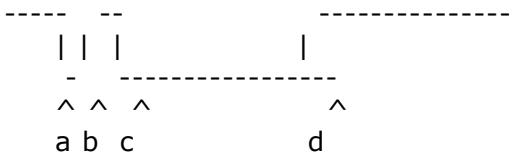
This benchmark measures the context switch time and displays the result on CSpy's terminal I/O window. It runs with every workbench that supports terminal I/O with printf.

5.3.6 OS_MeasureCST_Scope.c

This benchmark uses the LED.c module to set and clear a port pin. This allows measuring the context switch time with an oscilloscope.

The context switch time is

$$\text{Time} = (d - c) - (b - a)$$



The time between c and d is the context switch time, but note that the real context switch time is shorter, because the signal also contains the overhead of switching the LED on and off. The time of this overhead is also displayed on the oscilloscope as a small peak between a and b.

5.3.7 OS_PerformanceTest.c

This sample tests how many primes can be calculated in one second to determine the speed of the embOS RTOS.

5.3.8 OS_Start_2Tasks.c

These samples show some basic functionality of embOS by using two tasks.

5.3.9 OS_Start_LEDBlink.c

These samples show some basic functionality of embOS by toggling LEDs in two tasks.

5.4 emUSB samples

These samples use SEGGER emUSB to demonstrate USB communication. **Please include the file `USB_Config_H8S2472.c` in the project.**

5.4.1 USB_BULK_Echo1.c

This sample program for emUSB demonstrates a simple 1-byte USB BULK echo server.

The windows client needed to evaluate this sample is located under "Start\Windows\USB\Bulk\SampleApp\Echo1.exe".

5.4.2 USB_BULK_EchoFast.c

This sample program for emUSB demonstrates a fast echo server to test the stack.

The windows client needed to evaluate this sample is located under "Start\Windows\USB\Bulk\SampleApp\EchoFast.exe".

5.4.3 USB_BULK_ShowDeviceState.c

This sample program for emUSB sample shows the status of the current USB state in the debugger terminal I/O.

5.4.4 USB_BULK_Test.c

This sample program for emUSB demonstrates a modified echo server to test the stack.

The windows client needed to evaluate this sample is located under "Start\Windows\USB\Bulk\SampleApp\Test.exe".

5.4.5 USB_CDC_Start.c

This sample program for emUSB demonstrates a simple USB2COM echo server.

You can connect to the echo server by connecting the target with your PC via USB and using a simple terminal program like Hyper Terminal to connect to the target via the virtual COM port. You can select every baudrate you like.

Chapter 6

Literature and references

This chapter lists documents, which we think may be useful to gain deeper understanding of technical details.

Reference	Title	Comments
[UM08001]	SEGGER J-Link / J-Trace User's Guide.	This document gives information about using the SEGGER J-Link / J-Trace ARM. It is publicly available from SEGGER (www.segger.com).
[UM01003]	User's & reference manual for embOS	This document gives information about using the generic parts of embOS. It is publicly available from SEGGER (www.segger.com).
[UM07001]	embOS/IP User Guide	This document gives information about using the SEGGER IP stack. It is publicly available from SEGGER (www.segger.com).
[UM09001]	User's and reference manual for emUSB	This document gives information about using the SEGGER USB stack. It is publicly available from SEGGER (www.segger.com).
[UM02001]	emFile User's Guide	This document gives information about using the SEGGER embedded filesystem. It is publicly available from SEGGER (www.segger.com).
[UM03001]	User's and reference manual for emWin	This document gives information about using the SEGGER GUI software. It is publicly available from SEGGER (www.segger.com).

Table 6.1: Literature and References